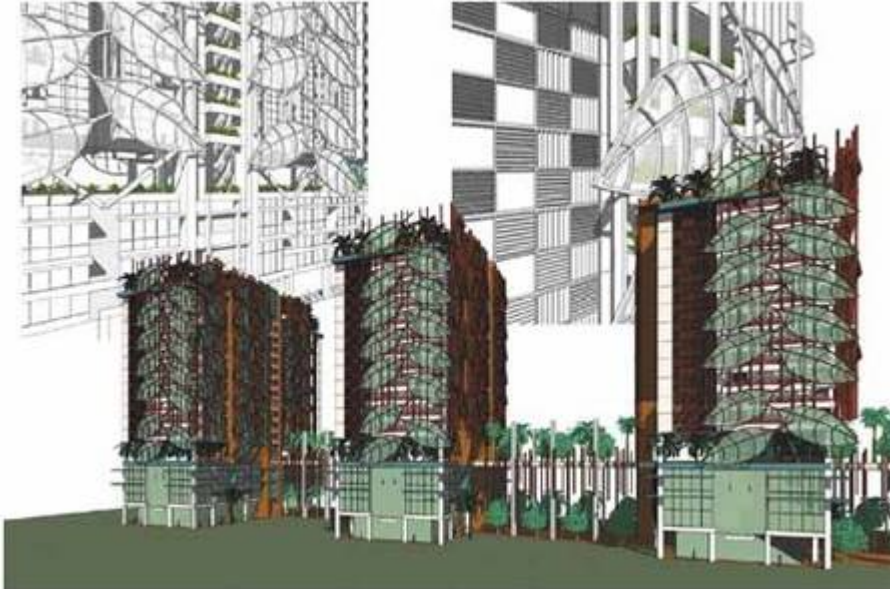


Hostel Datum In-City (2012)

2012: Perancangan



"Prominently located at the intersection of the LDP Expressway and the Federal Highway, Datum In-City PJ is a next generation fully integrated city hub. its 20-acres include a hostel that will accommodate 10,000 staff and 1,000 parking bays, which are part of the Western Digital factory expansion programme.

This more than RM2.6 billion GDV project generate 5.3 million sq ft of space comprising corporate and signature offices, SoHo office suits, flexible commercial and retail space along with al-fresco restaurants and upmarket condominiums - all within a carefully planned verdant elevated setting. Planned with the environment in mind, the Datum In-City is designed by incorporating the latest practices in Eco-sustainability architecture to achieve maximum GBI ratings. "

(Sumber: PKNS Online, 30 Mac 2012:

|
 "Datum In-City - PJ's new hub").

"Datum In-City is a 10-acre mixed-development that will feature five residential blocks, three office towers, three hostel towers, a shopping mall, an international school and a transport hub. The site near Western Digital in Kelana Jaya currently houses an MBPJ depot centre. "We are ready to sign with Western Digital for the accommodation complex for 10,000 of its staff. [It will] be an international showcase for the company's staff accommodation," Othman says."

(Sumber: City & Country, The Edge Malaysia, Issue 915, June 18-24, 2012:

|
 "City&Country: PKNS' affordable housing strategy").

From:

<https://bangi.pulasan.my/> - **Cebisan Sejarah Bangi**

Permanent link:

https://bangi.pulasan.my/datum_incity_hostel?rev=1753850046

Last update: **2025/07/30 12:34**

