

Home

[1st Caving site off
Kampung Gelok,
Lenggong](#)
[2 Photos same
ImageMSVR](#)
[Cast Iron Spiral Stair
to the Bell Tower](#)
[cnr jln hishamuddin
and leboh pasar](#)
[hoarding around the
market square, kl](#)
[kedai gunting
rambut adik beradik](#)
[Malaya before 1937](#)
[medan pasar](#)
[Muara Sg.Lumpur 2](#)
[Muara Sungai
Lumpur](#)
[Old Selangor
unmasked; KL,
Klang](#)
[PAM HCC at Gallery
Sultan Azlan Shah,
Bukit Chandan,
Kuala Kangsar](#)
[picture additions
unmasked](#)
[picture additions
unmasked 2](#)

**PAM Heritage
Conservation
Committee members
at Lenggong Valley,
Ideas Competition
Briefing**
**Photo with Minister
Datuk Seri Nazri Aziz**
RMA Submission
Sitemap

[Home](#) >

Old Selangor unmasked; KL, Klang

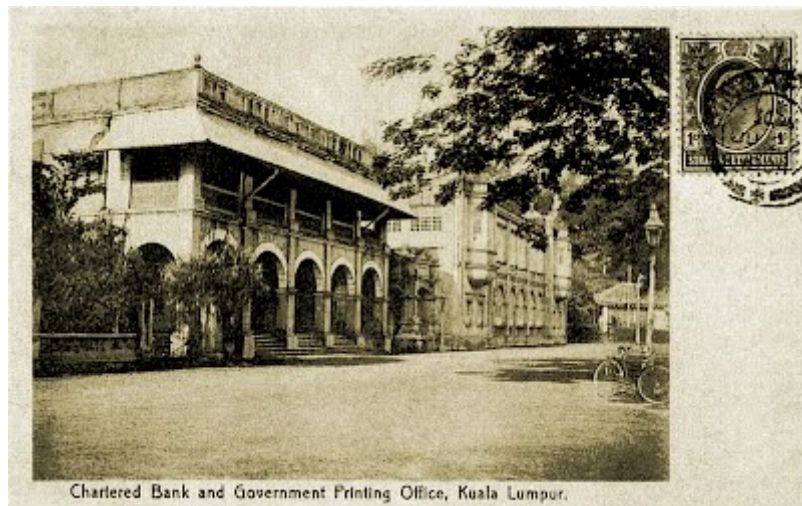
Colonialism and Capitalism

In order to exploit the administrative dependencies and dominance on resources available, labor and market forces from the native lands, the settlers teamed up with foreign traders and group of capitalists. They practiced hegemony, politically to divide and rule, protecting their cultural imperialism. Thus indirectly they had to exercise control via influence as well as formal military support and or the economic leverage. These apply to both work and play.

The interlocutory requirement on economic viabilities was to provide lending facilities as part of the commitment to investments, for implementing the yields and results of the harvests.

Hence the bank was needed in its place as the first to exist, followed by the government printers.

The Chartered Bank of India, Australia and China, was the earliest to operate a branch in KL in 1888, first at some shophouses, then in 1891, erected its own premise at Leboh Pasar Besar.



[charteredprinting02b2b.jpg](#) (1891) [Chartered Bank & Government Printing Office]

The Government Printing Office for Selangor was originally set up at Bukit Aman. It later served the needs of FMS in 1904, and further upon the closure of the one at Taiping, Perak, with equipment and staff, both and together transferred into one building with neo-Renaissance facade formerly intended for the Federal Secretariat, built in 1909.
(There could possibly be another building been put up at the same location in 1899.)



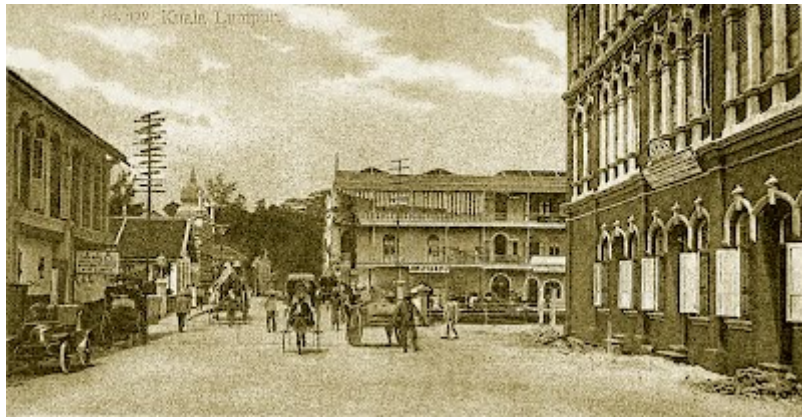
[printingoffice02b2b.jpg](#) (1909) [Government Printing Office]

The Chartered Bank was also replaced and reconstructed at the original site in 1909.



[chartered02b2b.jpg](#) (1909) [Chartered Bank]

Meanwhile, at the other end of Market Street, things were also taking shape, for the changes, upon the demise of Yap Ah Loy. Properties were sub-divided at the well-known areas of Market Square.



[marketstreet02b2b.jpg](#) [Lebuh Pasar Besar near Medan Pasar (Market Square)]

The Federal Postal Office was also finally completed in 1907 upon the government land deal with Loke Yew on the shophouses and relocation of the Loke Chow Kit's department store at the road junction, directly opposite the FMS Railways, Central Officers. The latter a reconstructed premise in 1905, to replace the single storey Selangor Railway Office that was built in 1896.



[jalanrajalebuhpasar02b2b.jpg](#) [Lebuh Pasar Besar junction of Jalan Raja & Jalan Sultan Hishamuddin]

The European social club was founded in 1884. Its building of timber structures was originally located at the east side of the parade ground. In early 1890s, it acquired few premises and built a two-storeyed structure of brick and tiles as the Club's centre-piece, on the west side of the Padang, designed by AC Norman.

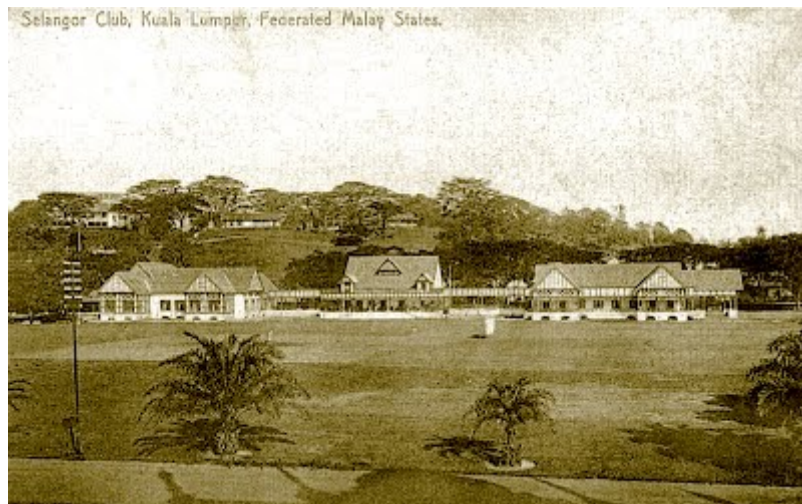


[selangorclub102b2b.jpg](#) [Royal Selangor Club]



[selangorclub202b2b.jpg](#) [Royal Selangor Club]

In 1910, the Clubhouse was extensively extended and renovated to a mock-Tudor style, to the design of AB Hubback, around the original centre-piece that somehow had lost its upper storey.



[selangorclub402b2b.jpg](#) [Royal Selangor Club]

In 1922, further renovation and extension were done which survived until the present day.

However, in 1970 fire destroyed the northern wing leading it to be rebuilt of slightly bigger scale.



[selangorclub402b2b.jpg](#) [Royal Selangor Club]

The Municipal Offices and Town Hall of Kuala Lumpur, was designed by AB Hubback in 1901, after the KL Sanitary Board was formed in 1890, and it was immediately constructed.

The cast-iron bridge over Gombak River in the photo below was built in 1890. It no longer exists.



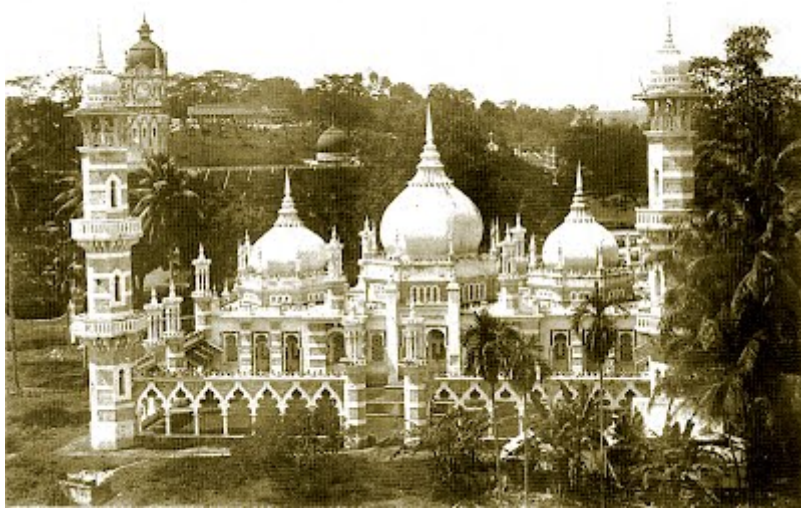
[dewanpanggunkl02b2b.jpg](#) [KL Municipal Hall (Panggun Bandaraya)]

AB Hubback completed the design of Masjid Jamek at the confluence of Klang and Gombak (Lumpur) Rivers in 1908. The foundation was laid on 23 March 1908 and the building was officially declared opened by DYMM Sultan Alauddin Sulaiman Shah on 23 Dec 1909. Photos after the building were completed.



- The Mosque, Kuala Lumpur, Selangor, F. M. S.

[jamek102b2b.jpg](#) [Masjid Jamek]



[jamek202b2b.jpg](#) [Masjid Jamek]



[jamek302b2b.jpg](#) [Masjid Jamek]

The colonnade Supreme Court building to the design by AB Hubback was completed in 1915.

It covers the almost triangular site between the enclaves of Municipal Hall and Masjid Jamek.



[supreme102b2b.jpg](#) [Old Supreme Court]



[supreme202b2b.jpg](#) [Old Supreme Court]

The colonnade Survey Office next to the Municipal Hall, fronting Jalan Tun Perak (previously known as Jalan Java and then Mountbatten Road), at the junction of Jalan Raja, was designed by AB Hubback, with the construction completed in 1910.



[surveyoffice02b2b.jpg](#) [Old Survey Office]

The previous building at the present Muzium Negara site was the Selangor State Museum.

It was designed by AB Hubback in 1902 and, the west wing was completed and opened to public in 1906.



[museum102b2b.jpg](#) [Selangor Museum]



[museum202b2b.jpg](#) [Selangor Museum]

The previous building had initially had the main entrance located at the south end.



[museum302b2b.jpg](#) [Selangor Museum]

In 1914, the building was extended and renovated, with the former main entrance relocated to the "middle" of the extended east wing. And, the external steps outside leading down to Jalan Damansara.

However, with the bad aim of high level Allied bombers in March 1945 during the last months of the Pacific War demolished the East Wing instead of the Brickfield railway marshalling yards, across the road.

Subsequently, the remaining damaged building was demolished, and replaced with the present building.

The present Muzium Negara was opened in August 1963.



[museum402b2b.jpg](#) [Selangor Museum]

(**Note:** The original road of Jalan Damansara from Kuala Lumpur led to [Damansara](#), a town situated at the confluence of Sungai Damansara and Sungai Klang, en route to Klang, passing through Sungai Pencala. The transport mode then was probably riding on Elephant!)

Klang is important due to its position commanding the lower reaches of the river by the same name. It became the royal seat of Selangor when Sultan Alauddin Sulaiman Shah, during his reign in 1898 to 1938, made Istana Mahkota Puri his home with a new palace built in 1903.

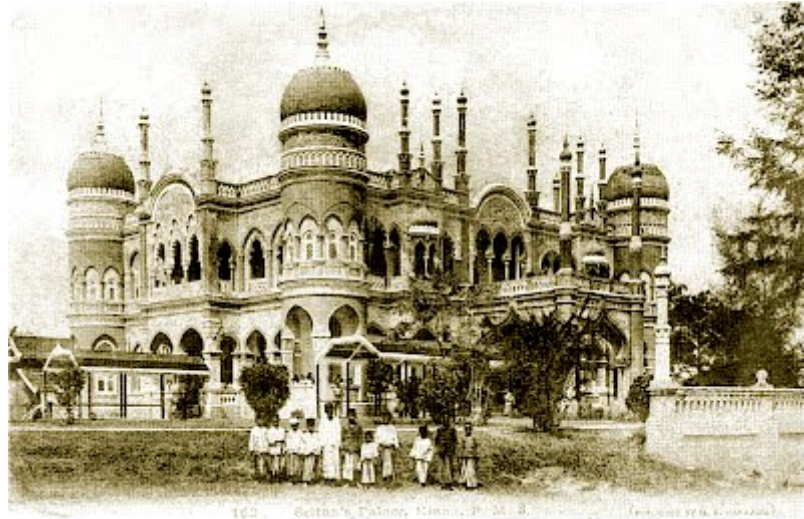
The building stood until 1958, before it was replaced by Istana Alam Shah which stands on its site today

The design of Istana Mahkota Puri's had all the combination and features from the Bangunan Sultan Abdul Samad, of which AB Hubback was heavily involved in making the renewed changes on the interior and exterior prior to his resignation from Selangor PWD in 1897 upon its completion

and having supervised the verification of the superstructure works. AND that, of the KL Municipal Hall, of which he designed on rejoining the reconstituted FMS PWD in 1901.

AB Hubback was said to be pursuing his Private Practice between 1898-1900,.

Kindly look for the details and the design elements done by AB Hubback in his work.











[mahkotapuri102b2b.jpg](#) [Istana Mahkota Puri]



[mahkotapuri202b2b.jpg](#) [Istana Mahkota Puri]

Cheers,
Pam Hericon.



	chartered02b2b.jpg ... pam hericon, Jul 8, ...	v.1	
	charteredprinting02... ... pam hericon, Jul 8, ...	v.1	
	dewanpangungk10... ... pam hericon, Jul 8, ...	v.1	
	jalanrajalebuhpasar... ... pam hericon, Jul 8, ...	v.1	

	jamek102b2b.jpg (1... pam hericon, Jul 8, ...	v.1	↓
	jamek202b2b.jpg (9... pam hericon, Jul 8, ...	v.1	↓
	jamek302b2b.jpg (8... pam hericon, Jul 8, ...	v.1	↓
	mahkotapuri102b2b... pam hericon, Jul 8, ...	v.1	↓
	mahkotapuri202b2b... pam hericon, Jul 8, ...	v.1	↓
	marketstreet02b2b.j... pam hericon, Jul 8, ...	v.1	↓
	museum102b2b.jpg ... pam hericon, Jul 8, ...	v.1	↓
	museum202b2b.jpg ... pam hericon, Jul 8, ...	v.1	↓
	museum302b2b.jpg ... pam hericon, Jul 8, ...	v.1	↓
	museum402b2b.jpg ... pam hericon, Jul 8, ...	v.1	↓
	printingoffice02b2b.j... pam hericon, Jul 8, ...	v.1	↓
	selangorclub102b2b... pam hericon, Jul 8, ...	v.1	↓
	selangorclub202b2b... pam hericon, Jul 8, ...	v.1	↓
	selangorclub302b2b... pam hericon, Jul 8, ...	v.1	↓
	selangorclub402b2b... pam hericon, Jul 8, ...	v.1	↓
	supreme102b2b.jpg ... pam hericon, Jul 8, ...	v.1	↓
	supreme202b2b.jpg ... pam hericon, Jul 8, ...	v.1	↓
	surveyoffice02b2b.jpg pam hericon, Jul 8, ...	v.1	↓

Comments

You do not have permission to add comments.