

[GO TO MAP SEARCH](#)

[BROWSE MAPS BY REGION](#)

[Africa](#)

[Asia & The Far East](#)

[Australasia](#)

[Celestial](#)

[English Counties](#)

[Europe & Russia](#)

[Great Britain & Ireland](#)

[Middle East & Turkey](#)

[Polar](#)

[The Americas](#)

[World](#)



## Fed. Malay States: A Map of the British Territories and British Protectorates in the Malay Peninsula



[Zoom map](#)

[Enquiry / Price](#)

**Cartographer:** Fed. Malay States

**Title:** A Map of the British Territories and British Protectorates in the Malay Peninsula

**Date:** 1911

**Published:** London

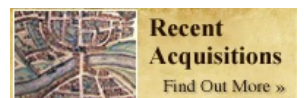
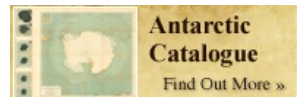
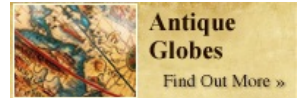
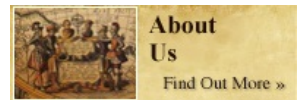
**Width:** 19 inches / 49 cm

**Height:** 29 inches / 74 cm

**Map ref:** SEAS4810

### Description:

Detailed map of the Federated Malay States based on a survey by C. W. Harrison of the Malay Civil Service. Harrison was the Commissioner of Lands and author of a number of guides to the Malay Peninsula and various rural improvements. Printed colour. SL [SEAS4810]



The Map House  
54 Beauchamp Place,  
Knightsbridge  
London SW3 1NY, UK  
Tel +44 (0)20 7589 4325

MAP GROUPS  
[Africa](#)  
[Asia & The Far East](#)  
[Australasia](#)  
[Celestial](#)  
[English Counties](#)  
[Europe & Russia](#)

[Great Britain & Ireland](#)  
[Middle East & Turkey](#)  
[Polar](#)  
[The Americas](#)  
[World](#)

FEATURED GROUPS  
[Antique Globes](#)  
[Featured Maps](#)  
[Print Gallery](#)  
[Recent Acquisitions](#)  
[Specialist Catalogues](#)



Web site built by [Alphasoft](#)