

[GO TO MAP SEARCH](#)

[BROWSE MAPS BY REGION](#)

[Africa](#)

[Asia & The Far East](#)

[Australasia](#)

[Celestial](#)

[English Counties](#)

[Europe & Russia](#)

[Great Britain & Ireland](#)

[Middle East & Turkey](#)

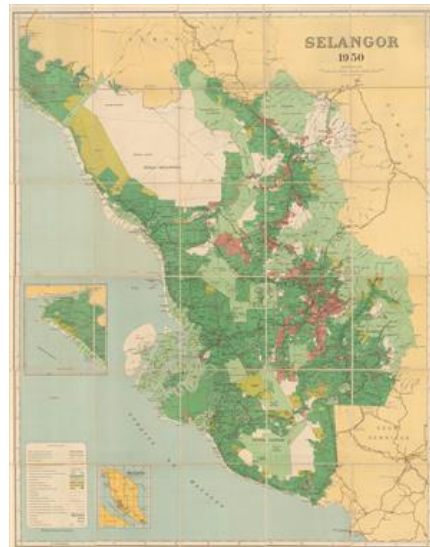
[Polar](#)

[The Americas](#)

[World](#)



## Survey Dept. F.M.S.: Selangor



[Zoom map](#)

[Enquiry / Price](#)

**Cartographer:** Survey Dept. F.M.S.

**Title:** Selangor

**Date:** 1950

**Published:** Malaysia

**Width:** 47 inches / 120 cm

**Height:** 38 inches / 97 cm

**Map ref:** SEAS5101

### Description:

Large and striking folding wall map of the state of Selangor published by the government of the Federated Malay States shortly after federation.

The map is focused on Kuala Lumpur. Although the capital city is now a federal territory, at the time of the publishing of this map, it was still a part of Selangor. The map bears a distinct colour scheme, which is keyed on the lower left. With its scale and government sources, this must be one of the most detailed regional surveys of the time.

This edition of the map is an update of a survey of the state first undertaken in the 1920s. The earliest edition we have been able to find in an institution was issued in 1926.

Printed colour. Folded. [SEAS5101]

